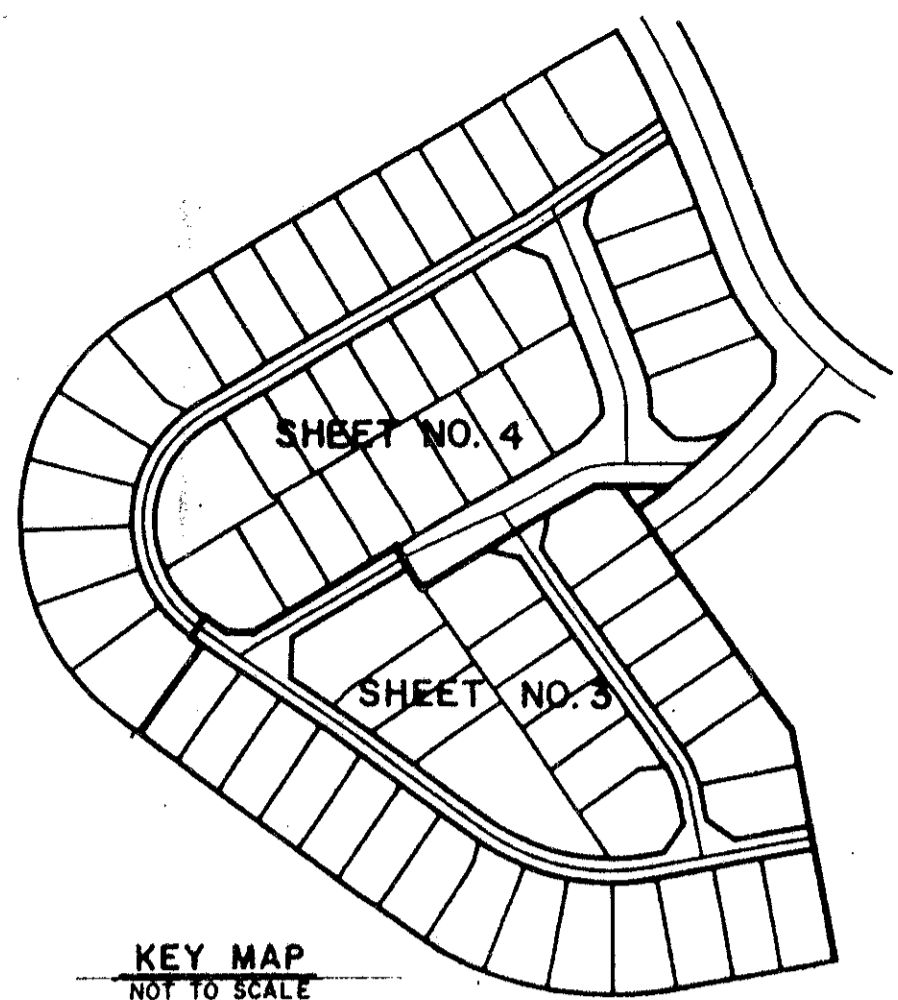


MONTAUK HARBOR REPLAT

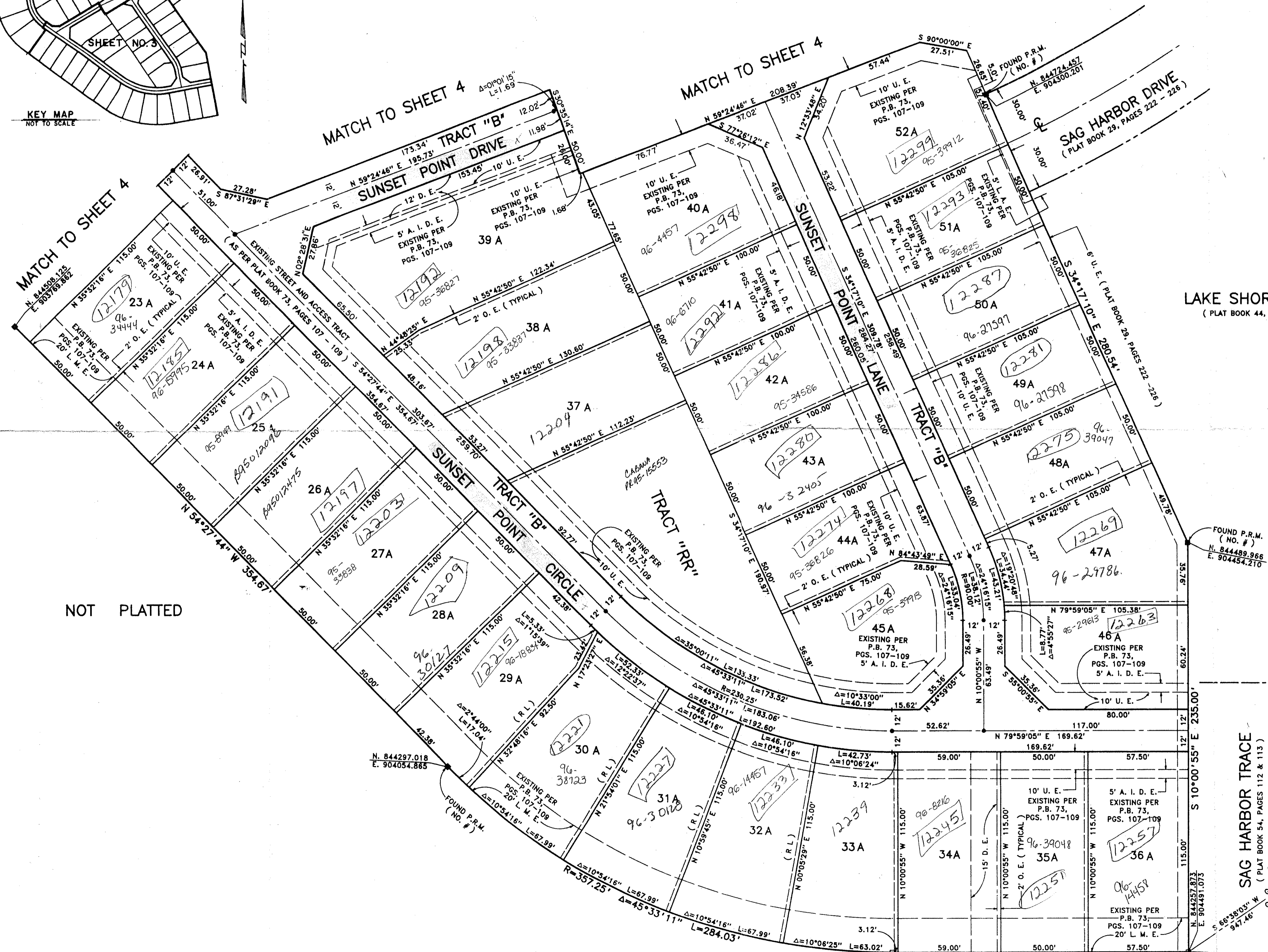
A REPLAT OF ALL OF MONTAUK HARBOR AS RECORDED IN PLAT BOOK 73, PAGES 107 THRU 109
PUBLIC RECORDS OF PALM BEACH COUNTY, FLORIDA, SAID PARCEL BEING A PART OF
WELLINGTON, A PLANNED UNIT DEVELOPMENT, LYING IN SECTION 10, TOWNSHIP 44
SOUTH, RANGE 41 EAST, PALM BEACH COUNTY, FLORIDA.

SHEET 3 OF 4

JULY, 1995



STATE OF FLORIDA
COUNTY OF PALM BEACH
This Plat was filed for record at _____
M. this day of _____ 19____
and duly recorded in Plat Book No. _____
on Page _____
Doro Hyatt, Wilken Clerk of the Circuit Court
By _____ D.C.



*PET. 86-32J
CURRENT
5/2/4/G*

LAKE SHORE HEIGHTS
(PLAT BOOK 44, PAGES 94 & 95)

COORDINATE NOTE:
STATE PLANE COORDINATES SHOWN ARE GRID DATUM, NAD 83 1990
ADJUSTMENT, FLORIDA EAST ZONE, COORDINATE SYSTEM 1983 STATE PLANE,
TRANSVERSE MERCATOR PROJECTION
LINEAR UNIT = US SURVEY FEET
ALL DISTANCES ARE GROUND
SCALE FACTOR - 1.0000116
GROUND DISTANCE X SCALE FACTOR = GRID DISTANCE

S 79°59'05" W (PLAT BEARING) 00°59'25" BEARING ROTATION
S 80°58'30" W (GRID BEARING) (CLOCKWISE) (PLAT TO GRID)

SOUTH LINE OF LOT 35A
AS SHOWN HEREON

*Pt. TR. 6A
WELLINGTON PAD*

NOT PLATTED

SUBDIVISION *MONTAUK HARBOR REPLAT
BOOK 76 PAGE 18 FLOOD MAP # 1008
QUAD # 62 ZONING AR
SE 86-32 ZIP CODE 33414
PUD NAME SAME
10/14/91

T12-730

ZORN
P. B. COUNTY BRASS DISK
N. 846500.628
E. 904353.872

DELVIN
P. B. COUNTY BRASS DISK
N. 846333.638
E. 905360.838

0332-112

Scale 1" = 30'

76/18

MONTAUK HARBOR REPLAT

Landmark Surveying & Mapping Inc.
1850 FOREST HILL BOULEVARD
PH. (407)433-5405 SUITE 100 W.P.B. FLORIDA

MONTAUK HARBOR REPLAT